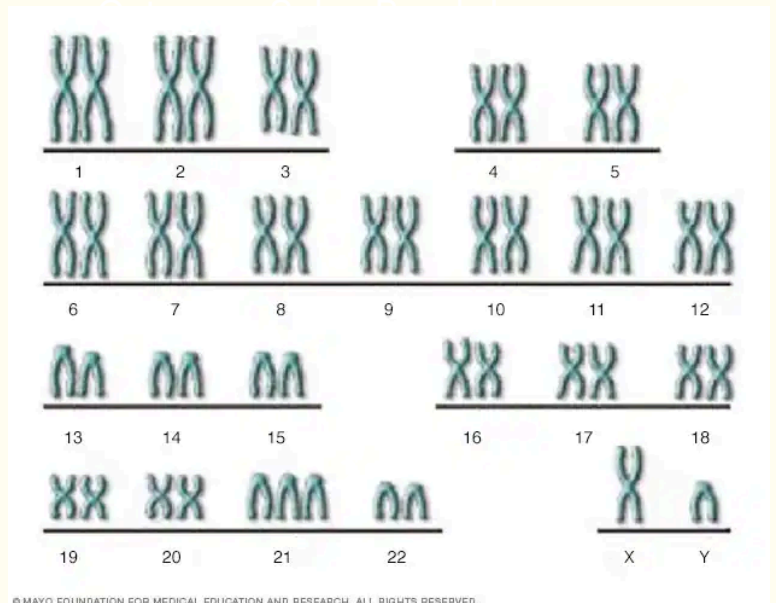


Down Syndrome



Symptoms

- Lifelong problems with intellect and development are usually mild to moderate.
- May develop heart issues
- Increased flexibility
- poor muscle tone, loose joints.
- Smaller hands and shorter neck and height.



© MAYO FOUNDATION FOR MEDICAL EDUCATION AND RESEARCH. ALL RIGHTS RESERVED.

Facial features:

- Flattened face
- smaller nose with a flat bridge
- smaller head
- small or folded ears
- Upward, almond-shaped slanting eye
- A small mouth with a tongue that usually protrudes.

Treatments:

There is no treatment that cures down syndrome completely, but physical and speech therapies are proved to improve the quality of patient's lives.

Cause:

Named after John Langdon Down who first described it, it is a genetic condition when an usual cell division during meiosis results in an extra full or partial copy of chromosome 21.